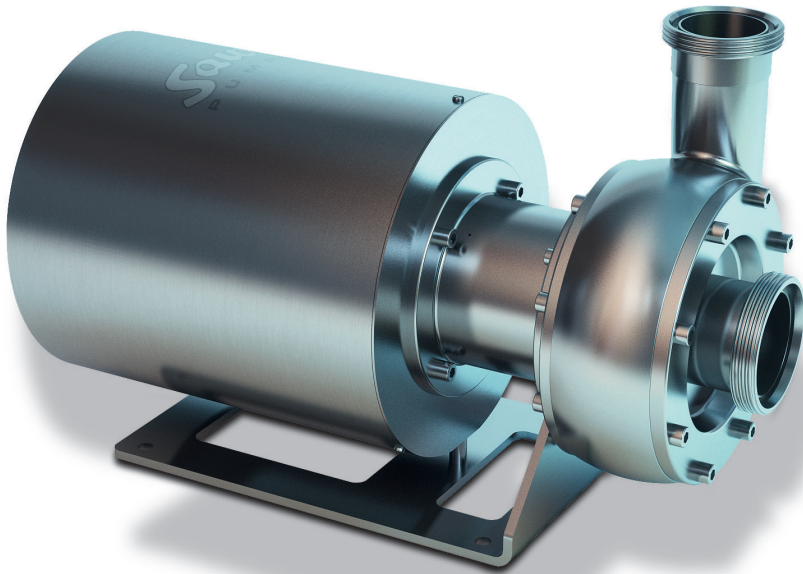


Centrifugal pump LE



The flow optimised impeller and volute allow a very silent, gentle and efficient handling of the liquids. The dead space free and hygienic design guarantees fast cleaning and complete draining.



Food industry

Liquid egg, vinegar, concentrates, flavourings, vitamins, milk, cream, curd, buttermilk, sauces, cooking oil, sugar solutions, brine, spices, fatty acids, CIP, yoghurt, whey, fats, cocoa butter, liquid malt etc.



Beverage industry

Mineral water, syrup, spirits, fruit juices (including fruit juices with pulp), wine, beer, brewer's yeast, lemon juice, alcohol, liqueur, CIP, vegetable juices, iced tea etc.



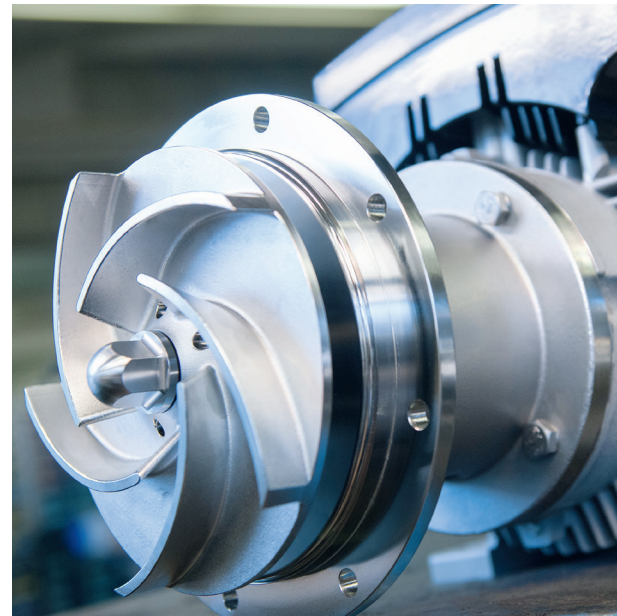
Pharmaceuticals/cosmetics

Perfumes, emulsions, alcohols, herbal extracts, flavourings, WFI/PUW/HPW, CIP/SIP, colourants, infusion solutions, applications in bio-technology etc.

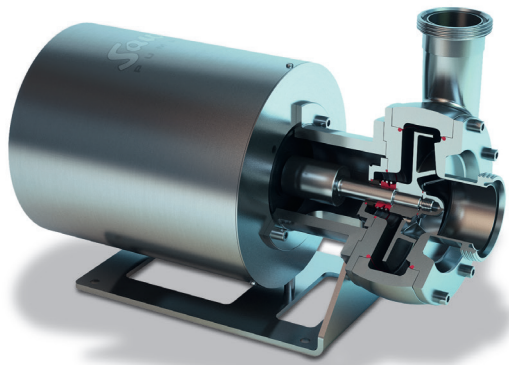


Chemicals/industry

Lyes, acids, milk of lime, alcohols, methanol, ethanol, solvents, hydrogen peroxide, DI water, urea, glycol solutions, various applications in reverse osmosis processes, biodiesel, waste water with particles, condensates, liquid-deicing salt etc.



silent and efficient



Optional forms:

- ✓ **ATEX**
for zones 1, 2, 21, 22
- ✓ **Pharma design**
for maximum safety, reliability and hygiene
(surface roughness down to $R_a < 0.4 \mu\text{m}$)
- ✓ **Magnetic coupling**
hermetically sealed design LEM for crystallising, toxic, flammable and environmentally hazardous liquids
- ✓ **Mobile**
version with sturdy trolley
- ✓ **Vertical option**
for easy draining
- ✓ **Bearing housing option**
for special requirements
- ✓ **Inducer**
for low $NPSH_a$ values ($< 1 \text{ m}$)

Features:

- Flow optimised spiral casing and impeller designs with high efficiencies,
- Dead space free design (hygienic design),
- Very silent operation,
- Modular design / low maintenance costs,
- Sturdy design comprising high-quality Cr-Ni-Mo stainless steel 1.4435 (316L) with electropolished surfaces,
- Pumping of solids-laden media with no risk of clogging,
- Ideal for fast temperature changes thanks to sturdy design,
- The robust design allows the handling of abrasive and corrosive media,
- All common shaft sealing systems (mechanical seals) available.

Flow rate [m^3/h]	max. 240
Delivery head H [m]	up to approx. 60
Temperature range [$^{\circ}\text{C}$]	minus 30 to 120, max. 145 (SIP)
Viscosity [mPa s]	up to approx. 500
Nominal pressure	PN6 up to PN100 (type LEH)

