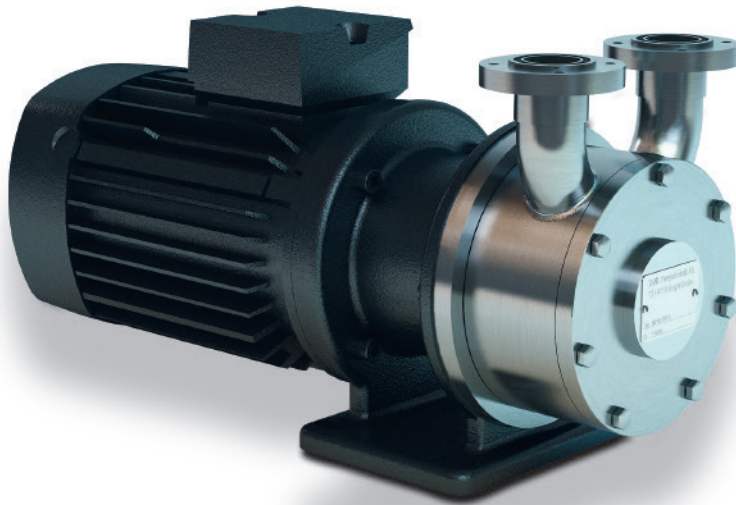


Peripheral pump P



The characteristics of the peripheral pump P makes it suitable for use in a wide range of industrial sectors where small volumes are to be pumped against high pressure. They can be installed in applications with a low inlet height without cavitation.

Food industry

Vinegar, concentrates, flavourings, vitamins, milk, cooking oil, fatty acids, CIP etc.

Beverage industry

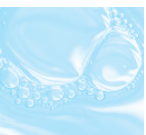
Mineral water, syrup, spirits, fruit juices, lemon juice, alcohol, CIP, beverage-concentrates etc.

Pharmaceuticals/cosmetics

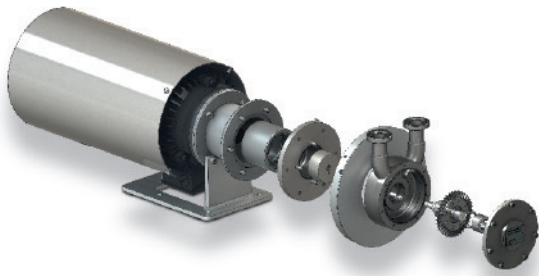
Perfumes, emulsions, alcohols, flavourings, WFI/PUW/HPW, CIP/SIP, proteins, essences etc.

Chemicals/industry

Lyes, acids, alcohols, methanol, ethanol, solvents, hydrogen peroxide, urea, colorants, decalcifier, glycol solutions etc.



The suitable pump for low flow rates against high pressure



Features:

- Pumping of low flow rates at high pressure without pulsation,
- Good adjustability with frequency converter due to a steep linear pump characteristic curve,
- The symmetrical design is suitable for both left and right rotation,
- Insensitive to cavitation when inlet height is low,
- Construction of 1.4435 (316L) with electropolished surfaces,
- Optional: SiC bearing and ceramic shaft to prevent abrasion and wear,
- Various shaft sealing systems (e.g. mechanical seals) available.

Optional forms:

- ✓ **ATEX**
for zones 1, 2, 21, 22
- ✓ **Pharma design**
for maximum safety, reliability and hygiene
(surface roughness down to $Ra < 0.8 \mu m$)
- ✓ **Magnetic coupling**
hermetically sealed design MP for crystallising, toxic, flammable and environmentally hazardous liquids
- ✓ **Bearing housing option**
for special requirements
- ✓ **Mobile**
version with sturdy trolley

Flow rate Q [m ³ /h]	max. 7
Delivery head H [m]	max. 100
Temperature range [°C]	minus 30 to 200 (type MP)
Viscosity [mPa s]	< 150
Nominal pressure	up to PN40

