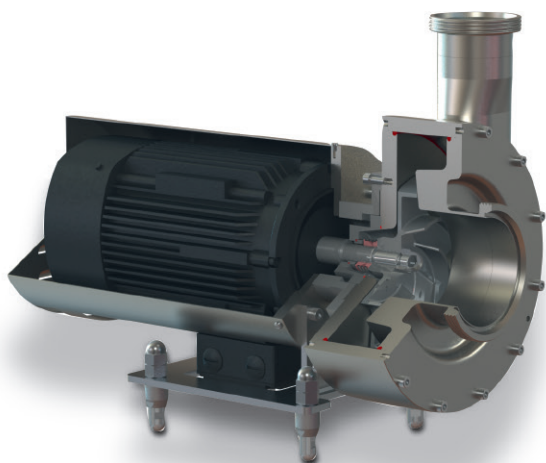


Gentle pumping of  
challenging media

# Centrifugal pump ZAB

**Sawa**  
PUMPE N



## Features and optional forms:

- Sturdy design comprising high-quality Cr-Ni-Mo stainless steel 1.4435 (316L),
- CIP and SIP capability,
- Gentle pumping of sensitive liquids,
- The broad pump body with enlarged diameter and extended outlet to DN 100 permit flow rates up to 200 m<sup>3</sup>/h,
- Bearing housing option for special requirements,
- ATEX for zones 1, 2, 21, 22,
- Developed and designed for the gentle handling of various cheese churd.

## Applications:

- Curd (for hard and soft cheese),
- Industrial wastewater containing sludge,
- CIP cleaning,
- Corrosive acids and lyes,
- Solids-laden wastewater.

Flow rate Q [m <sup>3</sup> /h]	max. 200
Delivery head H [m]	up to 25
RPM [1/min]	800 to 1500
Temperature range [°C]	up to 120, max. 145 [SIP]
Viscosity [mPa s]	up to 500
Nominal pressure	PN10

