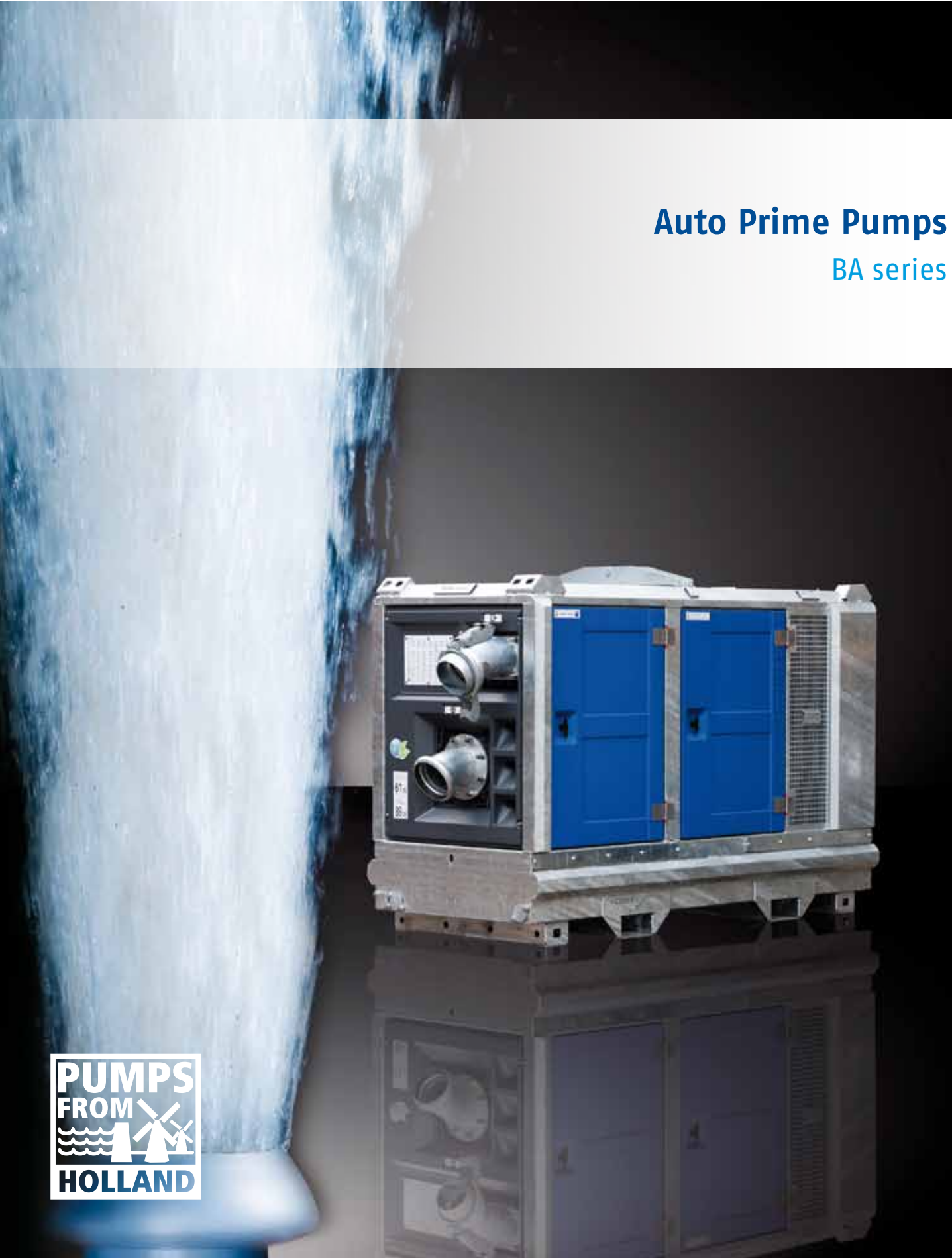


Auto Prime Pumps

BA series



Pumps for results





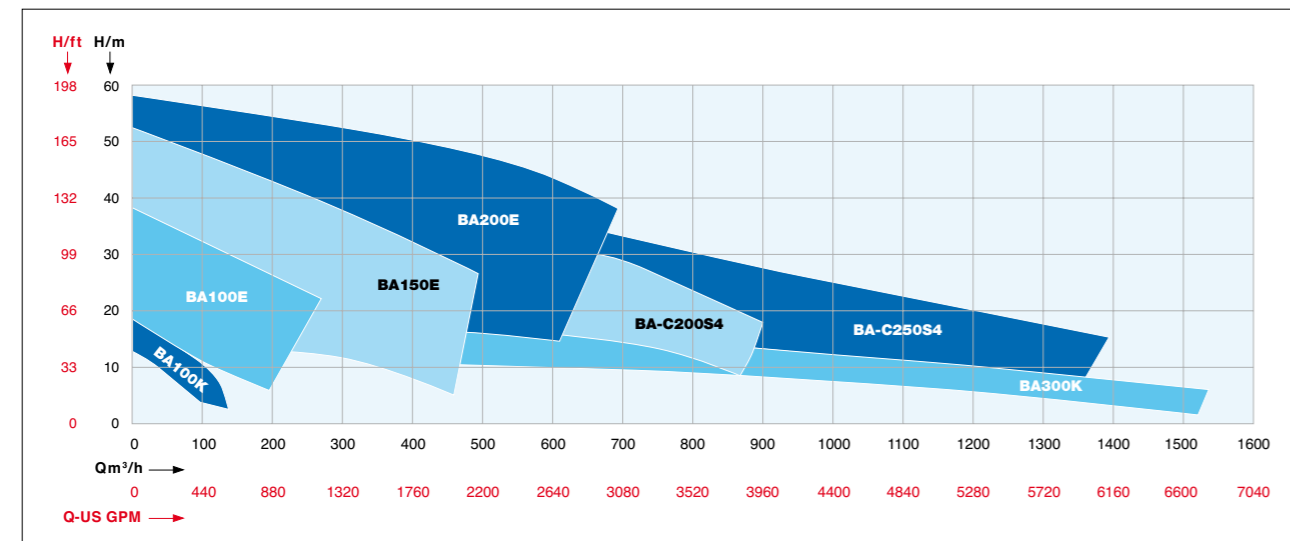
Servicing the market for over 60 years

BBA Pumps BV has been operating as a dedicated supplier of pumps and affiliated equipment for over 60 years. Being a Dutch company, we at BBA know how to keep our (and your) feet dry, no matter what. For over half a century we have been supplying pumping solutions to the construction, pump rental and dewatering markets throughout the world. We can provide you with anything ranging from an off-the-shelf pumping solution to a custom designed dewatering- or fluid management system that meets your exact specifications.

World-class performance

The BA series has been designed to be deployed on the most demanding applications. Using high efficiency pump-ends in combination with sophisticated diesel engine technology, the BA range offers maximum performance at minimal running costs.

BA series



Specifications and illustrations can be subject to revision without notice.

Introducing the BA series

Not just a pump, but a complete concept offering:

- Lowest cost of ownership
- Versatility in applications
- Reliable and durable technology
- High efficiency pump-ends
- Environmentally friendly
- Modular build, interchangeability of parts



Sustainability

Our environment is important to us and we continue to explore new ways to reduce our impact on our surroundings. The BA series does not only offer lowest cost of ownership, it is also an environmentally responsible choice on multiple levels:

- High efficiency pumps minimising fuel consumption
- Emissions in accordance with EU stage & US EPA Tier regulations
- Corrosion free hot dip galvanised canopy
- Corrosion free composite door panels and powder coated plating
- 100% Oil-spill free priming system
- Fully self contained unit featuring a double wall fuel containment tank en fluid containment system eliminating fuel/oil spills at all times



Auto prime pumps: The BBA pumps BA range

After starting the pump, the belt driven MP50 vacuum pump starts pumping air from a vacuum is built in the pump casing thereby drawing in water from the suction side, which opens the non-return valve and pumping commences. As the connection thereby preventing fluids from entering

the volute. As the discharge side of the pump is sealed off by the non-return valve, When the volute is filled with water, the centrifugal pump builds up pressure, pump is primed, the reliable float system closes the vacuum pump the priming system and/or causing spillages.



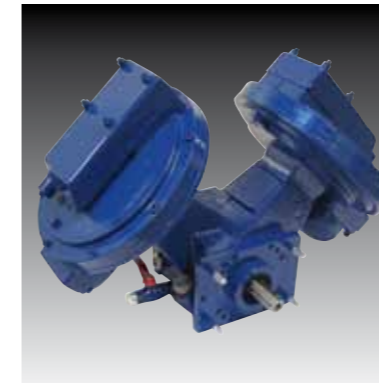
Impeller

A selection of high efficiency impellers are available for the BA range. By using high grade steel (42CrMo4) the pumps can be used with corrosive or abrasive fluids.



Easy inspection

All oil glasses, draining points and filler plugs are easily accessible and situated on one side of the pump.



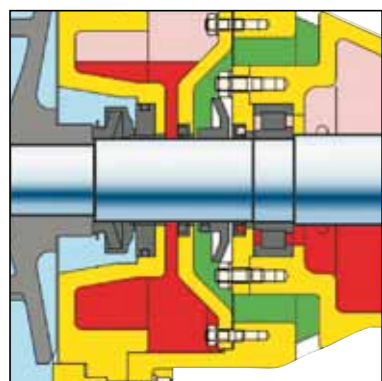
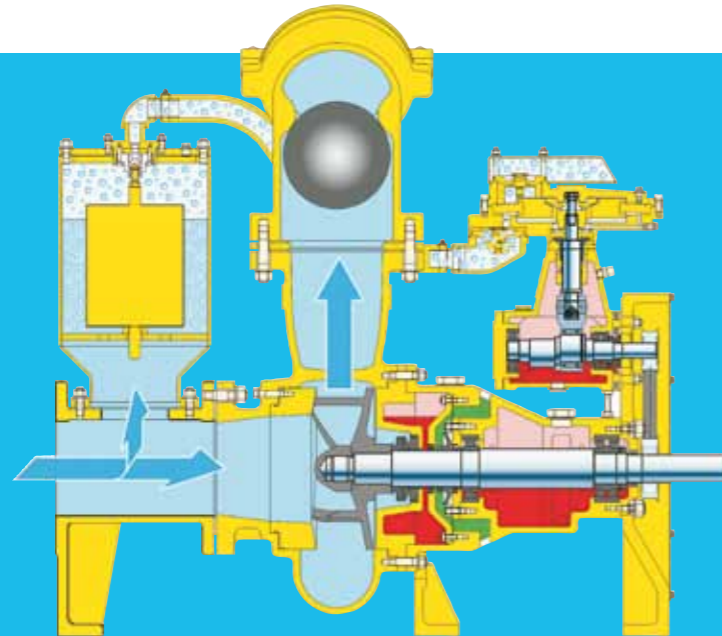
Reliable vacuum pump

MP series diaphragm pump. Air-cooled, water resistant and 100% oil-spill free offering air handling capacities of 50 m³/h or 100 m³/h.



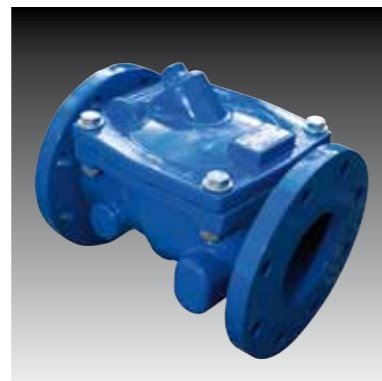
Large inspection covers

Easy access to all critical areas, e.g. float box, impeller and non-return valve.



Oil chamber and pressure relief chamber

The large oil chamber offers optimal seal cooling allowing dry running or snoring. The pressure relief chamber prevents fluids from entering the bearing block at all times.



Non-return valve

The Swing Flex® non-return valve features a Buna-N flap in a cast iron housing. This maintenance-free valve creates perfect sealing of the discharge port for reliable priming and re-priming.



Adjustable wearplate

The wearplate can be adjusted without disassembling the pump-end, ensuring maximum pump efficiency.



Interchangeable parts

The modular design of the BA series minimises parts requirement thereby lowering stock keeping costs and facilitating maintenance.

BA Electric drive models

The electrically driven BA range features:

- High quality electric motors (country of origin NL)
- Galvanised, stackable frame or canopy featuring forklift pockets and a central lifting point
- Control panel with softstarter, customisable to suit your requirements



Model	Pump					Electric motor		Canopy	Open frame
	Flow m³/h	Flow gpm	Head m	Head feet	Ø mm	Power kW	Speed rpm		
BA100K D193	130	572	17	56	82	7,5	1500	M10-23	ET10-23
BA100E D255	250	1100	23	76	80	15	1500	M10-23	ET10-23
BA150E D285	450	1980	27	89	80	22	1500	M10-23	ET10-23
BA200E D325	700	3080	32	106	80	45	1500	EW12-25	ET12-25
BA300E D324	1400	6160	18	60	100	75	1500	EW12-25	ET12-25
BA300E D350	1550	6820	24	79	100	110	1500	EW12-33	ET12-33

Specifications and illustrations can be subject to revision without notice.



BA100 in M10-19 Enclosure

Designed with smaller sewage bypass operations in mind, the BA100K D193 in M10-19 canopy features a single channel impeller with a 82 mm free passage and offers a flow rate of up to 135 m³/h. The pump is coupled to a single cylinder Hatz diesel engine, minimising the fuel consumption to 1,5 litres an hour on full load.

The compact canopy design features a 220 liter on-board diesel tank which gives the unit a fuel autonomy of approximately 150 hours. Furthermore, with a noise level of 52 dB(A) at 10 meters this pump unit can operate 24/7 even in areas where sound emission levels are critical.

Model	Pump					Diesel engine				Canopy
	Flow m³/h	Flow gpm	Head m	Head feet	Ø mm	Brand	Model	Power kW	Speed rpm	
BA100K D193	135	594	18	59	82	Hatz	1D81Z	5,5	1500	M10-19

Specifications and illustrations can be subject to revision without notice.

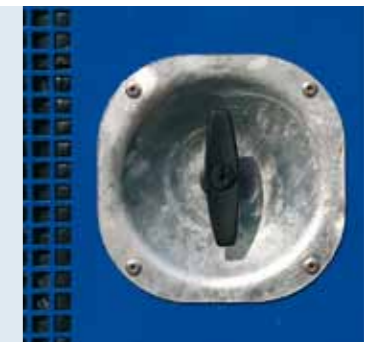
Protection bars

Protecting the doors from damaging and ensuring a factory new look.



Lockable doors

All doors feature heavy-duty T-locks.



Stainless steel hinges

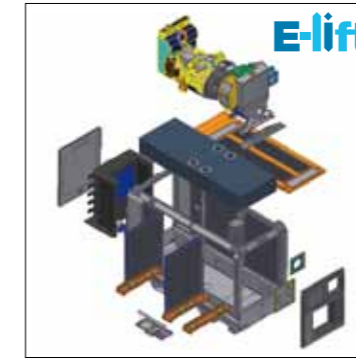
All doors fitted with stainless steel hinges with lubrication points.



Auto start-stop

Standard auto start-stop system with float switches minimising fuel consumption.





BBA E-lift® system

By removing the roofpanel, the pump and diesel engine can be quickly removed from the canopy, allowing easy cleaning and quick servicing of the pump.



Custom trailer

We have developed a custom built, road-legal trailer for all 4" and 6" pump units in M10-23 canopy or ET10-23 frame.



Tankframe

The BA100 and BA150 are also available in an open diesel version in the ET10-23 tankframe.

4"-6" dewatering and sewage pumps

With the development of the new E-range of impellers in combination with the revolutionary M10-23 canopy and ET10-23 frame, BBA Pumps has set a new standard for diesel driven pumping equipment. By combining our experience with the cutting edge technology we have been able to create a compact and lightweight pump unit without having to make sacrifices when it comes to reliability, durability and sound emission levels.

Model	Pump					Diesel engine				Canopy	Open diesel frame
	Flow m³/u	Flow gpm	Head m	Head feet	Ø mm	Brand	Model	Power kW	Speed rpm		
BA100E D255	250	1100	23	76	80	Perkins	403D-15	13	1500	M10-23	ET10-23
BA100E D265	265	1166	35	115	80	Perkins	404D-22	23	1800	M10-23	ET10-23
BA150E D285	460	2024	27	89	80	Perkins	404D-22	20	1500	M10-23	ET10-23
BA150E D285	475	2090	37	122	80	Perkins	404D-22T	34	1800	M10-23	ET10-23

Specifications and illustrations can be subject to revision without notice.





6"-12" dewatering and sewage pumps

For the larger units in the BA range, we have developed the EW canopy. The canopy uses a modular build system that has a universal and recognisable look throughout the range. Featuring a heavy-duty galvanised frame in combination with PE door covers the canopy is virtually maintenance free and offers a lasting factory new look. Should sound levels not be critical these units are also available as open diesel.

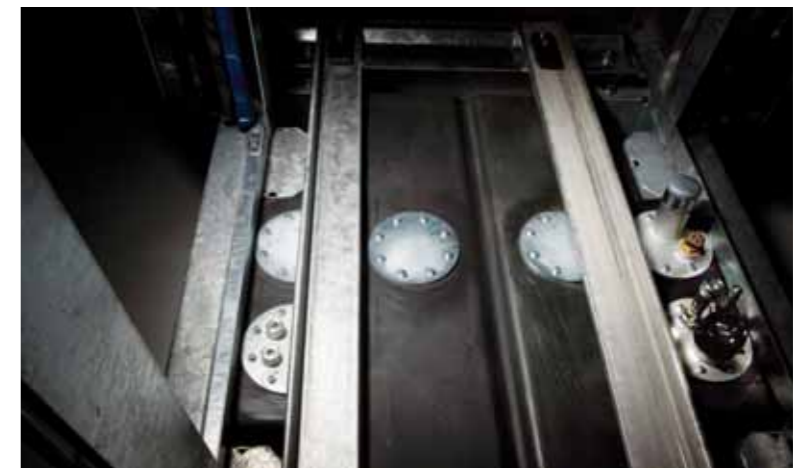
Model	Pump					Diesel engine				Canopy	Open diesel frame
	Flow m ³ /u	Flow gpm	Head m	Head feet	Ø mm	Brand	Model	Power kW	Speed rpm		
BA150E D285	490	2156	48	158	80	Perkins	1104D-44T	54	2100	EW12-25	ET12-25
BA200E D328	700	3080	32	106	80	Perkins	1104D-44T	45	1500	EW12-25	ET12-25
BA200E D328	700	3080	55	182	80	John Deere	4045HF285	100	2000	EW12-25	ET12-25
BA-C 200S4 D330	900	3960	58	191	86	John Deere	4045HF285	75	1800	EW12-33	ET12-33
BA250K D375	1200	5280	12	40	100	Perkins	404D-22T	36	2000	EW12-33	ET12-33
BA-C 300S4 D356	1280	5632	41	135	102	Perkins	1104D-44TA	68	1500	EW12-33	ET12-33
BA300K D324	1400	6160	18	59	100	Perkins	1104D-44TA	67	1500	EW12-33	ET12-33
BA-C2504S D394	1400	6160	44	145	86	Perkins	1106D-E66TA	95	1500	EW12-40	ET12-40
BA300K D350	1550	1550	24	79	100	Perkins	1106D-E66TA	95	1500	EW12-40	ET12-40

Specifications and illustrations can be subject to revision without notice.



Easy maintenance

With the E-Slide system, the pump and motor are mounted onto a subframe that can be easily removed from the canopy using a forklift. This allows quick servicing and easy cleaning of the canopy.



Fuel tank

Double wall fuel containment, corrosion free, 300 liter high density polyethylene (HDPE) fuel tank, located in the base of the canopy.



Factory Acceptance Test

We are capable of conducting a complete Factory Acceptance Test in our in-house testing facilities, should this be desired. Furthermore, we are able to offer extensive training programs in our BBA Pumps Training Centre.



High flow pumps

Within the BA series we carry a range of pumps specifically designed for high flow applications. These pumps commonly find their use in the field of flood protection or for providing additional capacity for pumping stations. Available in open and sound attenuated diesel driven versions, this line of pumps offers excellent pump efficiencies combined with exceptional flow capabilities. Furthermore, free passages of up to 259 mm and discharge pressure up to 10 bar make these pumps suitable for a variety of raw water applications.

Model	Pump					Diesel engine				Canopy
	Flow m ³ /u	Flow gpm	Head m	Head feet	Ø mm	Brand	Model	Power kW	Speed rpm	
BA-C350 S8 D444	2000	8800	40	132	102	John Deere	6068HF485	171	2200	EL 15-45
BA-C400 S8 D559	2700	11880	31	102	114	Perkins	1106D-E66TA	163	1800	EL 15-50
BA-C450 S8 D673	3200	14080	33	109	127	John Deere	6090HF485	225	1800	EL 15-50
BA-C500 S11 D711	5500	24200	37	122	127	Caterpillar	C18	409	1800	EL 24-60
BA-C600 S12 D660	6500	28600	24	79	133	John Deere	6090HF485	225	1800	EL 24-60
BA-C750 S4 D868	9000	39600	29	96	259	Caterpillar	C18	330	1800	EL 24-80

Specifications and illustrations can be subject to revision without notice.





High head / high pressure pumps

The high head pumps in the BA range offer discharge pressures of up to 22 bar. These multifunctional pumping systems find their use in general rental-, industrial- and construction applications. Particularly suitable for use as booster pumps or emergency pumps these units are typically used for clean water applications.

High pressure pumps

Model	Pump					Diesel engine				Canopy	Open diesel frame
	Flow m ³ /u	Flow gpm	Head m	Head feet	Ø mm	Brand	Model	Power kW	Speed rpm		
BA80H D275	150	572	90	297	25	Perkins	404D-22T	44	2800	M10-23	ET10-23
BA80H D315	155	682	107	353	25	Perkins	1104D-44T	63	2400	EW12-25	ET12-25
BA80H D315	200	880	90	297	25	Perkins	1104D-44T	62	2200	EW12-25	ET12-25
BA-C 100H1 D418	340	1496	98	323	16	John Deere	4045HF285	100	1800	EW12-33	ET12-33
BA-C 150H7 D406	700	3080	85	280	31	Perkins	1106D-E66TA	165	1800	EW12-40	ET12-33
BA-C 150H7 D418	850	3740	115	380	31	Volvo Penta	TAD952VE	234	2000	EL15-50	ET12-40
BA-C 200S3 D444	1100	4840	107	353	86	Caterpillar	C9	198	1800	EL15-50	ET12-40

Specifications and illustrations can be subject to revision without notice.

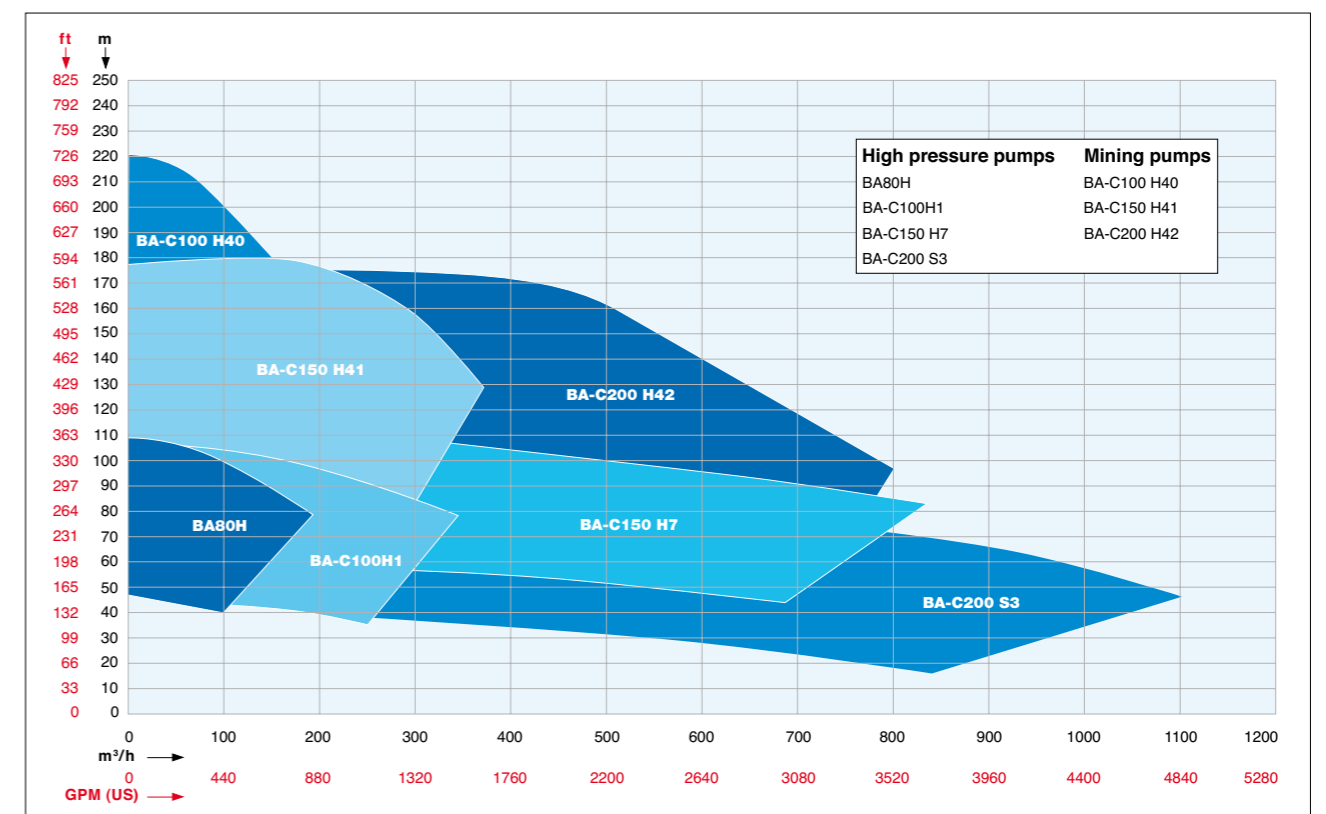
Mining pumps

Model	Pump					Diesel engine				Canopy	Open diesel frame
	Flow m ³ /u	Flow gpm	Head m	Head feet	Ø mm	Brand	Model	Power kW	Speed rpm		
BA-C100 H40 D498	150	660	175	578	19	Caterpillar	C6.6	128	2000	EW 12-40	ET 12-33
BA-C150 H41 D508	300	1320	150	495	25	Caterpillar	C7	166	1800	EL 15-45	ET 12-40
BA-C200 H42 D483	800	3520	130	429	51	Caterpillar	C13	304	1800	EL 15-50	ET 15-44

Specifications and illustrations can be subject to revision without notice.

High pressure mining pumps

In mining large quantities of groundwater need to be dealt with on a daily basis. BBA Pumps carries a full range of pumps geared towards the specialist needs one encounters in the mining market. With a pressure range exceeding 200 meters of head, made of hard-wearing materials such as GGG70 and offering sufficient solids handling capabilities, this pump range is fully geared to the mining market.



Specifications and illustrations can be subject to revision without notice.

BBA Pumps BV

Edisonstraat 12
Postbus 498
7000 AL Doetinchem
The Netherlands

T +31 (0)314-368 436
F +31 (0)314-378 403
E info@bbapumps.com
I www.bbapumps.com

